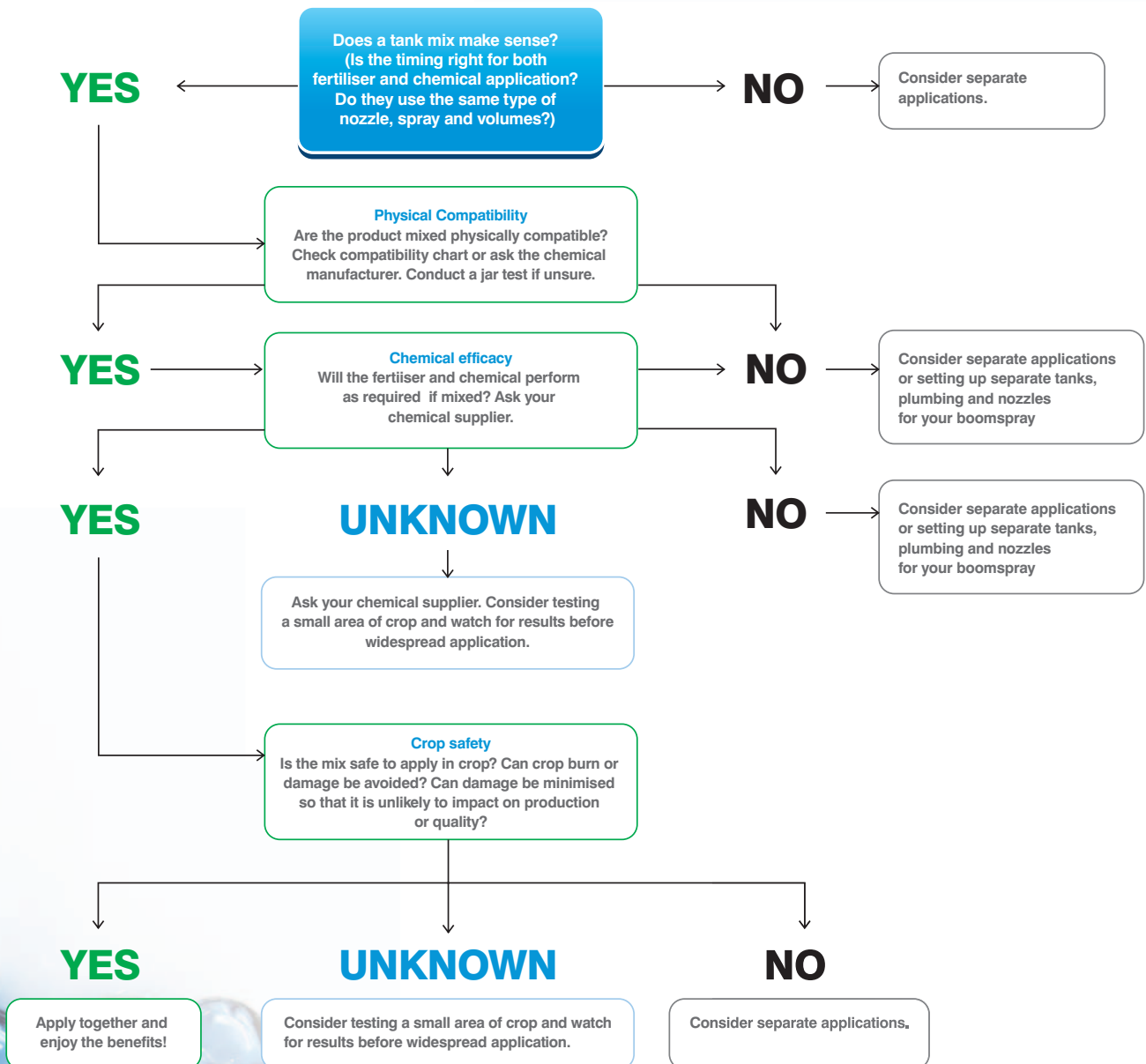


# EASY N compatibility with crop protection chemicals

Many winter crop growers are interested in mixing EASY N® fertiliser with crop protection chemicals for boomspray application. The practice can save growers time, money, fuel, labour and wear and tear on machinery. It may also help to reduce compaction and crop damage by running of the same wheel tracks.

A range of other mixes can be applied, but growers must first consider a range of compatibility issues. While there is some industry information on physical compatibility and crop safety, there is limited knowledge on the efficacy of crop chemicals tank mixed with Easy N.

## Compatibility issues to consider



# Get Npowered<sup>™</sup>

The **power** and **flexibility** to  
turn spring time into **BOOM TIME.**

## Minimising leaf burn

1. Environment plays a large part in the degree of leaf burn (minimising leaf scorch can occur by timing applications to cooler temperatures < 18°C and more so < 15°C and Delta T conditions between 2-6)
2. Higher rates of Easy N will cause more burn
3. Addition of chemicals will increase leaf burn risk - particularly EC formulations, selective grass herbicides in cereals and oils and wetters.
4. Dews and early morning applications tend to increase leaf burn. Dews accumulate and act as wetters as well as the leaf having low surface tension from overnight respiration.
5. Crops showing phototoxicity (chemical effect) are more susceptible to leaf burn - leave >3 weeks prior to Easy N application eg. Achieve damage.
6. Crops can sustain leaf burn while vegetative (up DC32 wheat and DC31 barley) without impacting yield - if you don't want to see burn use streamers.

## Pesticides Rules

1. There are **no chemicals that have on label use with Easy N**
2. Amines – (Amicide 625, Amine 500 2 4-D and Amine 625 2 4-D) **ARE NOT** compatible with Easy N.
3. Addition of chemicals will increase leaf burn risk - particularly EC formulations & selective grass herbicides in cereals.
4. If chemical is “hot” on the crop leave Easy N out - otherwise maximum 50L/ha Easy N.
5. Oils and wetters will significantly increase burn – efficacy of chemical can be reduced if left out
6. If a chemical states not to add a wetter or oil don't add Easy N as crop damage will be increased ie. Tigrex
7. Mixing order
  - a. minimum of 20% water
  - b. add chemical in correct mixing order
  - c. add Easy N
  - d. maintain good agitation (EC's may layer)
  - e. apply tank mix within 6 hours